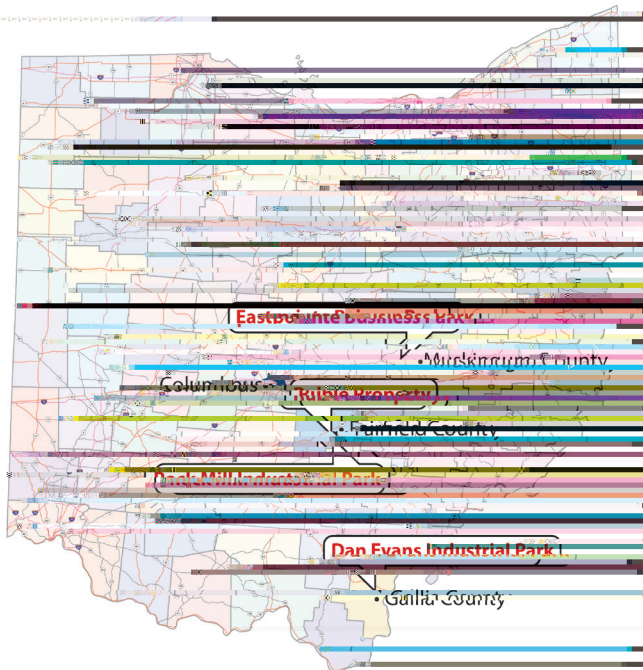




OHIO'S ELECTRIC COOPERATIVES CURRENT

December 2017

Immediately-Developable Properties



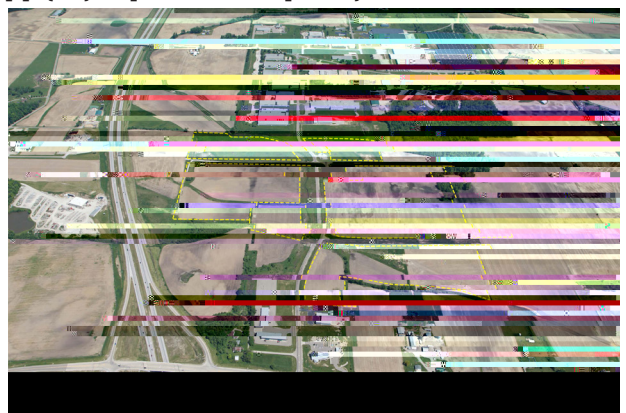
Ohio consistently ranks as one of the top U.S. destinations for new corporate facilities, meaning prime sites are quickly snapped up. Economic working cooperatively to ensure the pipeline of immediately-developable sites stays full with diverse location opportunities.

SiteOhio is a JobsOhio program to help companies, a comprehensive review and analysis," says Phil Smith, JobsOhio project manager.

To support communities and property owners with high quality industrial sites in territory served by Ohio's Electric Cooperatives (OEC), OEC recently awarded grants of \$15,000 each to help the following

Prime opportunity at lower cost

Corridor delivers much more of what today's businesses and their employees seek including low property and



With its abundant water resources and infrastructure with capacity for significant growth, Rock Mill's Ady-Austin Certified Shovel Ready sites are ideally situated for food processing and manufacturing.

The Ruble site was recently zoned for heavy industrial use and is fully served by all utilities. The

The 1,200-acre Eastpointe Business Park located 2.5 miles north of Interstate 70 and just east of Zæ}^•çä||^ÉÁU@ã [Áã•Á@ [{ ^Ác [Ác@:^^ÁØ [!c~ } ^Áí €€Á& [{]æ}ã^•Áã}ç [|ç^ÁÁã}Á- [[áÁ]! [&^••ã} *ÉÁ { æ} ~æ&c~ !ã} *ÉÁ æ}áÁ [á], ^!áÁ•^!çã&^•ÉÁV@^ÁZæ}^•çä||^ÉT~•\á} *~ { ÁÔ [~ } c^Á& [{ { ~ } äc^Á@æ•Á^æ!} ^áÁæÁ!^ } cæcã [}Á- [!Á { ^^cã} *Áà~•ã} ^••^•çÁ} ^^á•Áæ} áÁ [^!•Áæ} Áæà~ } áæ} cÁ, [!\ - [!&^Á, äc@ÁH€É€€Á] [c^ } cãæ|Á^ {] [^^^•Á, äc@ã} Á a 45-minute drive of Eastpointe.

%V[meet the continuing demand for large immediately-developable sites, the OEC grant was used to complete feasibility and engineering studies for a 250-acre undeveloped tract in Eastpointe,” states

gered species survey and help prepare the site for immediate development. The 77-acre industrial site is a premier industrial development opportunity, particularly for companies in food processing and manufacturing, transportation sector manufacturing and assembly, and wood products manufacturing.”

“The visibility it deserves,” notes Kent Eldridge, V.P. Member Services for Buckeye Rural Electric. “We are excited about the potential for this site and the opportunity to bring new jobs and investment to the area.”

For more info about Dan Evans Industrial Park, contact Melissa Clark at (740) 446-4612, ext. 271 or mclark@gallianet.net.

Economic development competitiveness demands talent



Spectacular natural amenities and a fordable cost of living attract both residents and businesses to south-eastern Ohio.

at Ohio’s Electric Cooperatives’ Economic Development. The sites that continue to hold our attention are those with an experienced workforce and a desirable quality of life.”

For more information about additional available, development-ready sites throughout central, eastern and southern Ohio and the skilled workforces in these regions, contact Dennis Mingyar at Ohio’s Electric Cooperatives.

NREDA Rural Economic Development



The award was presented to Dennis Mingyar, OEC, by a select group of past presidents representing electric and telephone cooperatives from across the nation. Dennis is a champion for rural economic development not only in Ohio, but also nationally. He has been recognized with so many people in our industry.”



(L to R) Jim Vermeer, Corn Belt Power Cooperative and President of NREDA presenting award to Dennis Mingyar, OEC; Linda Salmonson, East River Electric Cooperative; and Mike Meissen, Iowa Area Development Group

